

# M E C K B E E S



Mecklenburg Beekeepers Association  
Meets the 3rd Thursday of each month at 7 pm  
2219 Tyvola Road  
Marion Diehl Park and Rec Building  
Mailing address: 121 Hermitage Rd Charlotte NC  
28207  
704-358-8075

Visit our website at  
[www.meckbees.org](http://www.meckbees.org)



President -  
Wayne Hansen

Vice President -  
Richard Flanagan

Treasurer -  
Libby Mack



Chaplain -  
Gene Shannon

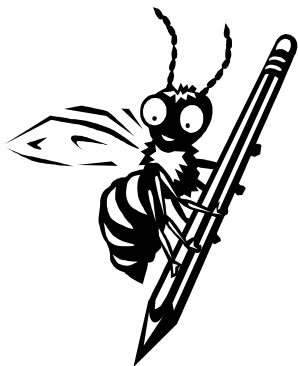
This months  
refreshments are  
provided by  
**Jimmy Odom**

## This Month's Meeting/Program Jan 15th



**Jeff Ritchie from Burke County will be our guest speaker. He raises and sells queens and will give a talk about all that goes into raising great queens for local beekeepers. Come and learn what it takes to make a great year for your bees with good hardy queens.**

### Bee School Is Coming!



Bee School 2009 starts February 3! Registration is now open to current members so if you want to attend don't delay, send in your registration form (elsewhere in the newsletter) and payment today. And, tell all your friends and neighbors to join us for this year's class. Registration for non-members will begin December 15 and the class may fill up fast.

Do you have new or gently used equipment or books to donate? Door prizes are greatly appreciated by the class and make for lively discussions. Please bring donated items to the December or January meeting.

Finally, if you are interested in mentoring a new beekeeper please contact Steve or Julie Morgan.  
803-547-0975 or [smorgan01@comporium.net](mailto:smorgan01@comporium.net)

## Updates and Information

### *Beekeepers Yearly Management Calendar for January*

**After Christmas when temps are above 50  
degrees feed pollen substitute.**

#### *Speakers for 2009*

**Jan 2009 Jeff Ritchie  
Queen Rearing**

**Feb 2009 Bill Bishop  
Swarm Control**

**March 2009 Christopher  
Horrigan Bee Research on  
bomb sniffing bees**

**April 2009 Don Hopkins  
Bee disease updates**

**May 2009 Gary Cathey  
Mead Making**

The Bee Man Candle Company retail store is closing!!! Everything 30-50% off, and it will only be open a few more days. Beautiful locally made 100% beeswax candles. Brian (aka The Bee Man) is moving to Raleigh to start a PhD program and so is closing the store, but may have an internet site available in the future. The store is at Camden and Tryon St. in Southend.





January 2009

If you missed the December meeting, you missed a good time and some good food. Amazing how people can get together and talk about nothing but bees! You'd think we were all proud first-time parents of a three-month-old! Elsewhere in the newsletter is probably a mention of the officers for 2009 – same names as 2008. I would like to thank the impromptu nominating committee for pulling together and holding the elections in a highly entertaining manner. For myself, I hope there is someone else willing to run for president at the end of 2009. This year has been fun, and 2009 will no doubt be better, but there are too many good people in the club capable of being president not to encourage someone to try it out.



In case you missed the December meeting, Carl Albrecht brought a good homemade Blue Orchard Bee (BOB) nest. This was the topic of the November meeting, when Richard Flanagan did a very nice presentation on Blue Orchard Bees. We found out that homemade nests for BOB's are easy to make. Simply drill holes 5/16 inside diameter 5 to 6 inches deep in some wood, and hang it up where the BOB's can get to it. They'll pretty much do the rest. It may take a season for them to make full use of the nest, but the process can be jump-started by mail-ordering some BOB's.

Bee school will be going full speed ahead starting the first week of February. The class is about three-quarter's full, so if you have friends who want to sign up don't delay.

Hope you and yours and your bees had a very good Christmas. The warmer weather Christmas Eve caused a bunch of activity around the hive entrances, and I found that one of the two hives I thought would die is very close to doing that. (The other hive got a little pollen patty and some sugar water and some good wishes.) The days are starting to get longer again already, so before you know it, we'll have swarms and splits and everything else bee-related going on. I've got to get a swarm trap ready for the back yard, and several pieces of equipment to assemble and paint. And, of course, another Bzzz to write.

Please remember that the swarm list is being updated for 2009. Just because a name is on the current list does not mean it will be on the 2009 list. Please check with Leslie Carlson to get your name added for 2009 (and pay your dues!)

The June meeting will be on a Saturday this year. Probably one of the first three Saturdays. More details when we have them.

Hap-Bee New Year!





GREENSBORO -- A debate over the birds and the bees took place Tuesday in Greensboro. The City Council held a public hearing to determine if it should change the ordinance on keeping chickens and bees on residential property. "There have been chickens in my neighborhood since I moved there in 1958. I hear a rooster crowing a few blocks away every morning. It doesn't bother me," homeowner Billy Jones said. But having chickens--and bees--nearby does bother some people. That's why the Greensboro City Council voted in favor of an ordinance that prohibits roosters in single-family homes, reduces where chickens and bee colonies can be kept and sets a limit on the number of animals. The decision split many who turned out Tuesday.

"I live in Lindley Park," homeowner Sherry O'Neil told the council. "It is an older neighborhood. Madison Avenue is over there close to it. I don't think those people would want chicken coops and bee hives that close to their property." "My neighbors enjoy the eggs. They've never complained that I've heard of and I promised that if we did have a problem with the rooster that we would fry it," Jones added. Despite the fact that the council voted in favor of the ordinance, it was not unanimous, and Councilwoman T. Dianne Bellamy-Small voiced her opposition. "The rooster is not a very loud-sounding noise. He makes his noise and then he shuts up. It's worse if we have motorcycles and boom boxes," she said.


People who already have chickens and bees will be grandfathered in and allowed to keep that which they already own.

The appearance of *Apis cerana* in Australia now puts U.S. regulators in a dilemma. Bee Culture Editor Flottum writes " It is thought that because the incursion was minor, has stayed minor, was so far away from where the exported bees are raised, and to date no mites have been found with the captured nests, they could eventually be eradicated. It seems that APHIS and their Australian counterpart are reconsidering that decision, due to commonsense, or pressure from U.S. beekeepers to make sure this pest does not come to the U.S. in a package of bees." <http://home.ezezine.com/1636/1636-2008.12.15.09.14.archive.html>



Local Florida entrepreneur Karen Wassmerk has developed a Varroa control device <http://www.scienceinAfrica.co.za/2008/october/debugging.htm>, and a new web site offers massive power and simplicity in selling beekeeping related materials <http://BeekeeperClassifieds.com>

Tammy Horn claims to have coined a new word, Apiforestation. Read about the project to plant sourwood trees on reclaimed coal mine lands in Appalachia, and the "Coal Country Beeworks Cooperative." Planting sourwoods might be a sweet deal. This also has similarities with other projects around the world, such as planting eucalypts in Israel. See <http://abeekeepersblog.blogspot.com>

A decorative border surrounds the central text area. It features a light purple background with several cartoon bees (yellow and black stripes, blue wings) and clusters of red and pink flowers with green leaves.

It is never too early to talk about swarms and swarm catching !!

We are updating now before the swarm season begins our Mecklenburg County beekeepers Swarm list for 2009.

Leslie from our bee club is kind of enough to head this project up. We need some help from those willing and able to catch swarms in our county and possible outside our areas too.

Leslie needs the following info in order to complete the list

They need to let her know their contact info, what areas they are willing to collect from, if they collect from structures, how high up they are willing to go, and anything else they may find pertinent

An example would be

I M Beekeeper 704-123-4567 willing to get swarms South Charlotte area only. No high swarms. Please call 9-5 pm

Contact Leslie at [kandlcarlson@bellsouth.net](mailto:kandlcarlson@bellsouth.net)

give this info as soon as possible.

I am a landscape architect in Charlotte - and am working with a client in Davidson. The family has purchased 185 acres just outside of town; a beautiful piece of property that remains totally undeveloped except for an enclosed beautiful vegetable garden. '09 will see the beginnings of a new 5-6 acre lake. The west branch of rocky river runs through the property. It is generally wooded but there has been some clearing and seeding of some of the acreage. The plan is to build a few houses on the property along with a barn and pastures. Possibly some cows at some point. The family wants to do some beekeeping on the property. well, sort of.....They're interested in purchasing all the materials and equipment but don't actually want to do the work themselves. The property is located along Grey Road which is about 5 minute's drive east of Davidson.

Can you help point me in the right direction to find someone interested in taking care of the bees?

Thanks so much in advance.

J'Nell Bryson

[jnellbryson@mac.com](mailto:jnellbryson@mac.com)



# DUES DUES DUES DUES DUES DUES

Yes, it's that time of year, time to renew your membership in our county association, and if you're not yet a member of the North Carolina State Association, consider joining up there, too. Both organizations deliver great value for your membership dollars, so support your beekeeping associations.

Mail this form and your check made out to Mecklenburg County Beekeepers to:

Mecklenburg County Beekeepers 121 Hermitage Rd Charlotte NC 28207

You can also get discounts of 20-25% on Bee Culture and American Bee Journal.

See Libby for a coupon or to pay directly for the subscription.

## Mecklenburg County Beekeepers Association

Please Print Clearly

Name \_\_\_\_\_

Address \_\_\_\_\_  
\_\_\_\_\_

City \_\_\_\_\_ State \_\_\_\_\_ Zip \_\_\_\_\_

Phone \_\_\_\_\_ Email \_\_\_\_\_

Send newsletter via \_\_\_\_\_ email (thanks!) \_\_\_\_\_ paper

Number of hives: \_\_\_\_\_

Today's Date \_\_\_\_\_ Membership Year 2009

Bee School \$30 \_\_\_\_\_ I am registering for Bee School

Includes 1 year membership in County Association

I heard about the bee school from \_\_\_\_\_

County Association \$5 I am a \_\_\_\_\_ New Member

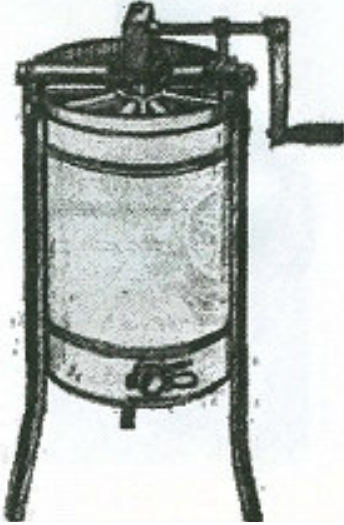
\_\_\_\_\_ Renewing Member

State Association \$15 I am a \_\_\_\_\_ New Member

\_\_\_\_\_ Renewing Member

### Total Payment





# It's Harvest Time!

We have the following equipment available for extracting honey:

- Extractor (manual)
- Uncapping tank (use your own excluder)
- Bucket with valve
- Electric uncapping knife

**The charge is \$2 per day to borrow the extractor.**

You will want to use your own filters and food-grade plastic buckets.

To obtain the equipment:

- Call Jimmy Odom to arrange a time to pick it up.  
Phone: (704) 408-2726  
Address: 17026 McKee Rd Charlotte NC 28278
- When you pick up the equipment, take an envelope and card to mail in your payment
- Return the equipment **promptly, clean and dry**
- Mail your payment in the envelope provided

With the growth of the club, there is heavy demand for the extractor in the summer months. There will be a waiting list, so be prepared for a short wait, and when you get the equipment, please return it promptly so the next person on the list can get it. Please don't pass it on to someone else who isn't on the list. Thanks!

### Visual Symptoms of a CCD Colony

- **Just days before its collapse the colony seemed to be strong and fully functional**
- **Mostly young bees remaining in the hive**
- **Bees are not aggressive**
- **Queen is present**
- **Eggs are present**
- **Full frames of brood may be present**
- **Brood may show signs of “shotgun” pattern**
- **Capped honey and fresh nectar are often present, although not in summer collapses, which are uncommon**
- **Fresh pollen has been stored in the hive recently, if external resources are available**
- **Supplemental feed (syrup and extender patties) if supplied, are ignored**
- **No robbing occurs**
- **No secondary pests (small hive beetles, wax moths or ants) are found**
- **No dead bees are noted around entrance of the hive**
- **Bees do not show any signs of winglessness, paralysis or other adult bee diseases.**

CCD tends to travel like a wave through a beeyard, and combining affected and unaffected colonies usually gives 2 dead colonies. Adding a package may help, and may not. There is a time until secondary pests will move in...using equipment before that time for more bees is risky and the colony may die again.

The Cause of Colony Collapse Disorder remains unknown, but the diagnosis, and thus the opportunity to administer remedial treatments is getting better all the time.

For the full article with additional information see the February issue of *Bee Culture* on our web site [www.BeeCulture.com](http://www.BeeCulture.com) after Feb 1.

