



G O T T A B E E

Mecklenburg Beekeepers Association
Meets the 3rd Thursday of each month at 7 pm
2219 Tyvola Road
Marion Diehl Park and Rec Building
Mailing address: 121 Hermitage Rd Charlotte NC 28207
704-358-8075
Visit our website at

www.meckbees.org



*President -
Greg Clements*

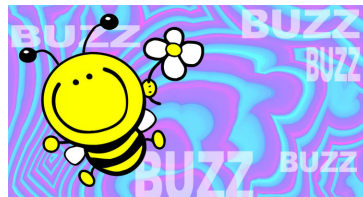
*Vice President -
Richard Flanagan*

*Treasurer -
Libby Mack*

*Chaplain -
Gene Shannon*



This Month's Meeting/Program Nov 15th



This month we are forgoing our regular meeting and having a field trip instead. We will visit the Bee Man Candle Company at 4224 Barringer Drive in Charlotte to learn about candle making with beeswax. Come and join us as we learn about another great product from the hive.

This months refreshments are provided by

John Balas

Sam Ritter, a Commercial Beekeeper here in Mecklenburg County, needs a beekeeper to help him out in 2008. He is looking for someone willing to run one of his beeyards in 2008. Interested? Call him at 704-365-4623

Congratulations to Ms. Julia Riley of Garland, NC (small town between Fayetteville and Wilmington) for purchasing the winning ticket of our John Deere Raffle this year. Now she is hoping for more rain to make the grass grow so she can put the beautiful machine to work.

Elvon G. Thomas of Raleigh won the hedge trimmer.

Stay tuned for more good news about our effort to raise funds to build an apiary at the NC Zoo in Asheboro.

**Charles Heatherly, President
NCSBA**

Updates and Information

Beekeepers Yearly Management Calendar for November

Make repairs on your equipment, assemble new equipment and make some time to plan your next beekeeping year.

Speakers for 2007

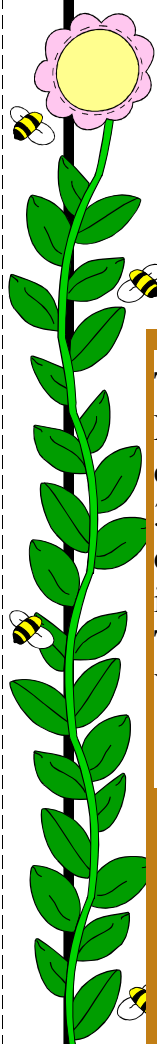
Nov-Field trip to Candle making at Bee Man Candle Company

Dec- Potluck Dinner

**Jan 2008 -
Prof. Buddy Marterre
Bee Stings**

**Feb Bob Blackwelder
Artificial
Insemination**

**March - Chip Stowe
Gaston County
Beekeeper**



To commemorate National Honey Month, NHB, along with architect Bryan Berg, constructed a 13-foot tall honey bear out of 3,000 smaller honey bears. The bear was constructed on Sept. 18 at Citigroup Center in New York City. After the Bear Build-a-Thon, the honey was donated to the New York Food Bank.

Calling All Members!

It's time to pitch in! We love our bees, and we love coming to our monthly meetings, receiving newsletters and attending bee school and other events. It's time to take a turn at helping these various tasks get done. Could you spend a couple hours a month on one of the tasks below? Of course you could. And we know you know the score -- those who volunteer early can have their pick of the choicest tasks. As for the rest of you, one of us will be calling soon to ask you to pitch in. So please say yes to pitching in to help our chapter thrive."

PRESIDENT'S COMMITTEE

Club Organization and Participation

- Increase membership participation in club activities
- Evolve the list of club activities and match people with tasks according to interest
- Maintain relations with NCSBA
- Consider participating in chapter competitions

Field Days

- Work with Bee School to coordinate Graduation Field Day
- Organize additional member events
- Consider joint meetings or events with neighboring counties
- Participate in nearby state meetings

Media Relations

- Keep up to date on current events and topics of interest, including CCD and African Bees
 - Become familiar with the NC Contingency Plan for dealing with African Bees
 - Provide periodic updates to members about current events
 - Establish / maintain relations with local news and media outlets, respond to inquiries, pitch story ideas
 - Work with Bee School to publicize the school
-

-VICE PRESIDENT'S COMMITTEE

Monthly Programs

- Seek input from members**
- Arrange program content / speakers / locations for monthly meetings**
- Introduce speakers at meetings**
- Have a couple ideas for "last-minute" programs as needed**
- Arrange refreshments for monthly meetings**
- Provide advance info for newsletter and website**
- Consider joint meetings or events with neighboring counties**
- Consider participations eg honey judging, tasting, etc.**

Newsletter

- Solicit ideas, input, and content**
- Shamelessly borrow content from elsewhere**
- Provide pointers to web and other interesting stuff**
- Layout for publication**
- Make copies suitable for mailing**
- Make PDF suitable for e-mailing**
- Consider advertising / sponsorship opportunities**

EMailing List

- Maintain email list of members and other interested persons**

Website

- Maintain the site**
- Solicit content from a variety of sources**
- Consider advertising / sponsorship opportunities**

Community Outreach

- Recruit and maintain email list of members interested in attending events, similar to Swarm List**
 - Recommend purchase of visual aids**
 - Outline typical presentations**
 - Respond to community requests; seek other opportunities if interested**
 - Recruit members interested in working with 4H or other youth programs; recommend how to approach this**
-

SECRETARY'S COMMITTEE

Membership

- **Maintain membership roster**
- **Collect local and state dues; forward state dues to state; distribute state membership cards**
- **Communicate membership and address changes to state**
- **Provide printed / PDF membership roster for distribution to members**
- **Provide labels or back page for mailed newsletters**
- **Assemble, staple, label and stamp newsletters**

Finance

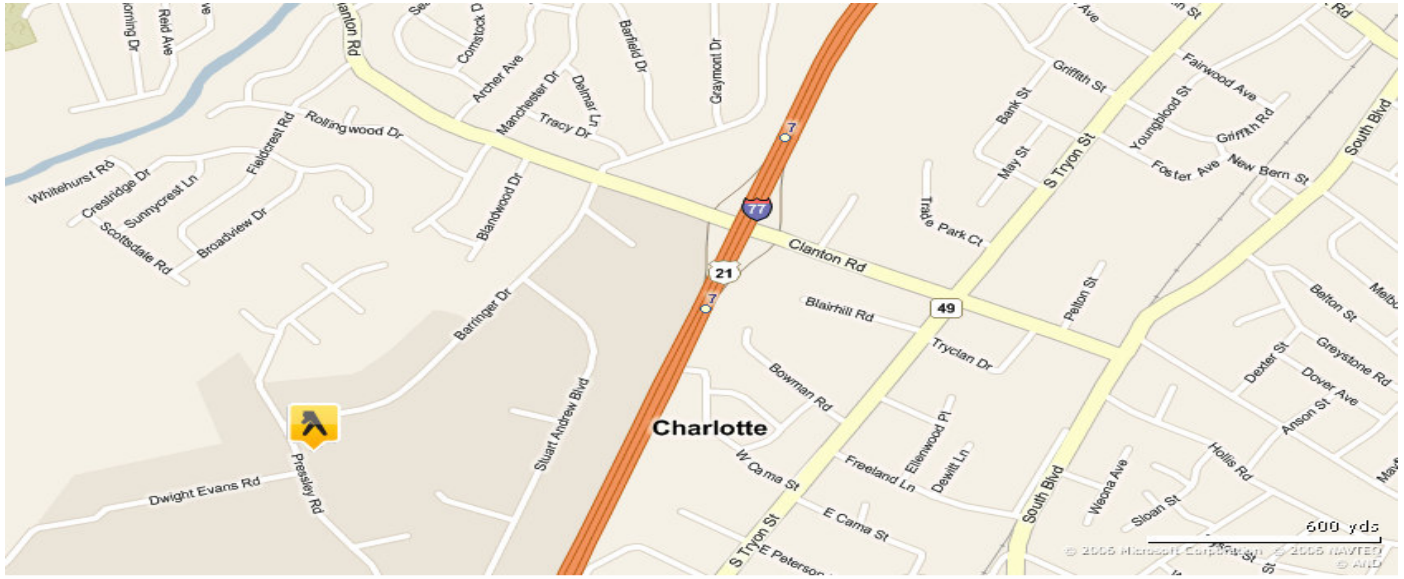
- **Maintain dues records, expense records, bank account and check book**
- **Collect dues; pay bills**
- **Collect money for extractor**
- **Produce financial statements**
- **Manage payments for magazine subscriptions, club logo clothing, etc.**

Extracting Equipment

- **Maintain equipment**
- **Field phone calls and manage waiting list**
- **Keep records of who / when / how long**
- **Distribute payment instructions to each equipment borrower**

BEE SCHOOL

- **Approach equipment suppliers, magazines and possibly members to provide catalogs, goodie bag items, discounts and door prizes**
 - **Copy materials and stuff goodie bags**
 - **Publicize the school with members, local papers, magazines, TV and radio stations, and flyers**
 - **Place ad(s) with Observer and others**
 - **Organize the curriculum, obtain and confirm speakers, finalize use of videos, finalize syllabus**
 - **Enhance the Annual Beekeeping Calendar**
 - **Add instructional content to website**
 - **Find a way to borrow or get donations of various types of equipment**
 - **different size hive bodies, different types of foundation, nuc box, feeders, etc.**
 - **Field phone inquiries and provide info to prospective students**
 - **Manage registration at first two classes**
 - **Create / maintain email and mailing list of students**
 - **Manage book sales at first three classes**
 - **Act as "MC" for classes**
 - **Create and send periodic School Announcements**
 - **Organize the mentoring or buddy program to match new beekeepers with experienced ones**
 - **Organize "equipment day" where students can get help assembling equipment**
 - **Work with events organizers for Graduation field day**
 - **Begin plans for a possible "intermediate" level beekeeping course**
-



Bee Man Candle Company Field trip Nov 15th 7-8 pm

4324 Barringer Drive Charlotte Nc 28217

Directions: Go north on I-77 exit on Clanton Road take a left at the exit

Cross over I-77 go to the next major intersection which is Barringer Drive

Take a left onto Barringer Drive

Stay on Barringer until it almost ends turn right into the Rubin Business Park

Suite 104

If you get lost call 704-525-0170 which is the number for the Shop or 704-607-0519 Richard Flanagan Cell number

Hope to see you all there as we tour the Beewax Candle Making

Propolis Component Kills Cancer Cells

Constituents of Brazilian Red Propolis and Their Preferential Cytotoxic Activity Against Human Pancreatic PANC-1 Cancer Cell Line in Nutrient-Deprived Condition Bioorganic & Medicinal Chemistry, Article in Press

<http://apitherapy.blogspot.com/2007/10/propolis-component-kills-cancer-cells.html>

In this study, the MeOH soluble extract of Brazilian red propolis was found to kill 100% PANC-1 cells preferentially in the nutrient-deprived condition at the concentration of 10 µg/mL...

Randy Oliver, who writes for Bee Culture and American Bee Journal, has changed his site location. the new URL is <http://www.scientificbeekeeping.com/index.php>



The North Carolina Zoo Society Honey Bee Exhibit is almost at its goal of reaching its funds for a permanent exhibit for beekeeping at the Zoo. Last totals show we are 10,000 dollars short of making this a reality. A challenge was presented by one of our local beekeepers to our club to come up with \$1,000 by the December Potluck Dinner. This individual will match that \$1,000 with their \$1,000. These funds will be matched with a grant enabling us to raise \$4,000 toward the Zoo exhibit. Let's not let this chance pass us up to help make a contribution to the Zoo for an exhibit that will educate and teach all those who visit the zoo on the positive aspects of beekeeping.