



G O T T A B E E

Mecklenburg Beekeepers Association
Meets the 3rd Thursday of each month at 7 pm
2219 Tyvola Road
Marion Diehl Park and Rec Building
Mailing address: 121 Hermitage Rd Charlotte NC 28207
704-358-8075
Visit our website at

www.meckbees.org

Jan

President -
????????????????

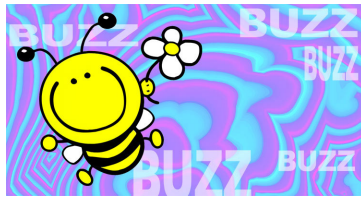
Vice President -
Richard Flanagan

Treasurer -
Libby Mack



Chaplain -
Gene Shannon

This Month's Meeting/Program Jan 17th



This month we are having Dr. Buddy Marterre come and speak on Honey bee stings. Dr Marterre spoke at our Summer State meeting and was a great instructor on Bee Genetics He brings great insight to the honey bee and we look forward to having him come and speak.

This months refreshments are provided by

????

New Future BeeKeeper

Scott and Candace Mayhew
announce the birth of:
Kayleigh Anne Kennedy
Mayhew
Born December 13 @ 11:04
8 pounds 4 ounces,
20 inches long



The continued evolution of apian defense mechanisms leads beekeepers to add body armor to their equipment.

Updates and Information

Beekeepers Yearly Management Calendar for **January**

Just after Christmas when temperatures are above 50 degrees feed pollen substitute; 1-1 1/2 pounds per hive
Mixture: 3 parts soybean meal, 1 part dried brewer yeast & 1 part powdered milk.

Speakers for 2008

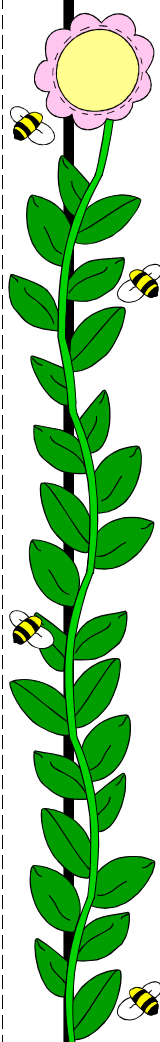
Jan 2008 -
Prof. Buddy Marterre
Bee Stings

Feb Bob Blackwelder
Artificial Insemination

March - Chip Stowe
Gaston County
Beekeeper

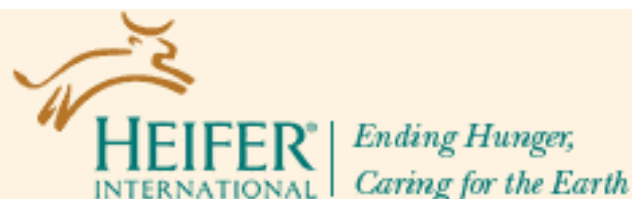
April—Art Duckworth
Gaston County
Beekeeper

May—Scott Ewers
Coop Ext Rep
Mecklenburg County



A local Beekeeper in our club ran into information on this charity that gives sustainable type agriculture gifts to individual families. You can donate honeybees to a family in Africa that offers a lifeline: pollen, cross pollination, honey, medicine, and all that good stuff. Check it out- let's give some bees away! -\$30

<http://www.heifer.org/site/c.edJRKQNiFiG/b.2668675/>



[Science Daily](#), 12/4/2007

A [new study](#) by a [Penn State College of Medicine](#) research team found that honey may offer parents an effective and safe alternative than over the counter children's cough medicines.

The study found that a small dose of buckwheat honey given before bedtime provided better relief of nighttime cough and sleep difficulty in children than no treatment or dextromethorphan (DM), a cough suppressant found in many over-the-counter cold medications.

Honey did a better job reducing the severity, frequency and bothersome nature of nighttime cough from upper respiratory infection than DM or no treatment. Honey also showed a positive effect on the sleep quality of both the coughing child and the child's parents. DM was not significantly better at alleviating symptoms than no treatment.

These findings are especially notable since an FDA advisory board recently recommended that over-the-counter cough and cold medicines not be given to children less than 6 years old because of their lack of effectiveness and potential for side effects.

More Tasty Ideas from National Honey Board:

Honey Moo, Honey Glaze and Honey Soda

New fruits of NHB's applied science program are ripe for the picking. In 2005, NHB began developing industrial formulas for food concepts using honey as the primary or defining ingredient. The formulas are made available to any food manufacturer interested in adding a natural extension to their product line. Past projects have included a solid honey and honey balsamic vinegar.

Now three new products are ready for a grand unveiling. Honey Moo, a milk modifier, uses the clean pure taste of honey to bring chocolate or strawberry flavor to milk. These products are part of a larger campaign to move kids away from soft drinks and towards healthier dairy products. Honey Glaze contains 65% honey and is available in three varieties - Honey Dijon, Chipotle Honey and Chili Garlic Honey. The glazes are an easy way to marinate meat for the grill or stir-fry, and they also make a great dipping sauce. The final products capitalize on the fast-growing drink segment – a kiwi-lime soda and peach oolong tea, both flavored with honey.

New product concepts developed by a commodity board have a unique set of advantages. NHB has in-depth knowledge of consumer attitudes toward honey, as well as the technical aspects of formulating with honey. What a private company might find most valuable is that NHB already has invested in making bench-top samples with preliminary formulations. However, full-scale production, product identity, packaging and distribution would be the responsibility of the manufacturer or marketing entity.

To find out more about these new honey products, contact Charlotte Jordan at (303) 776-2337 or charlotte@nhb.org.

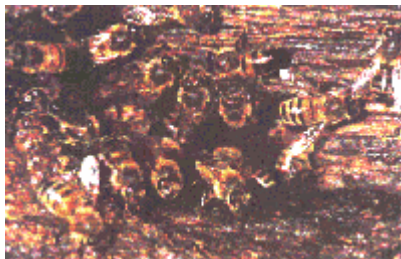
Burt's Bees Sets Out to Rescue Its Own

Burt's Bees Partners with NAPPC to Raise Awareness of Colony Collapse Disorder

DURHAM, N.C., Nov. 5 /[PRNewswire](#)/ -- The mysterious disappearance of bees, called Colony Collapse Disorder (CCD), is a growing threat to honey bees, the mainstay of pollination services in agriculture. Bee-friendly, natural personal care company Burt's Bees is addressing this environmental issue by developing a campaign with co-founder Burt Shavitz that will raise consumer awareness through [PSA distribution](#), online marketing and consumer sampling efforts. Burt's Bees will also partner with the North American Pollinator Protection Campaign (NAPPC) both with research funding as well as a heightened awareness push later this year.

On November 2nd, Burt's Bees will hit the big screen with a new cinema campaign to raise awareness of CCD. Burt's Bees public service announcement run in nationwide cinemas will coincide with the theatrical debut of "BEE MOVIE," the highly anticipated DreamWorks Animation SKG movie co-written by and starring Jerry Seinfeld opposite Academy Award(R) winner Renee Zellweger.

The new PSA highlights the fact that every third bite of food we eat depends on bees for pollination, and features Burt's Bees co-founder Burt Shavitz talking about the important role bees play in agriculture. "We believe the bees' survival depends on how we manage and protect our world," he says. "Burt's Bees is funding research to help find a solution, and you can help too. Support your local organic farmer. Plant a seed. Make a healthy place for the bees to live." The spot also urges audiences to visit www.burtsbees.com to sign up to receive a [free packet of seeds](#) to grow bee- friendly flowers and learn more about Colony Collapse Disorder.



Bee School Is Coming!
Bee School 2008 starts January 29.

**Tell all your friends and neighbors to
join us for this year's class.**

**Do you have new or gently used equipment or
books to donate?**

**Door prizes are greatly appreciated by the class
and make
for lively discussions.**

**Please bring donated items to the December or
January meeting.**



WANTED: NewBee Mentors

We have another big swarm of new beekeepers starting class in January and are looking for a dozen mentors to help the new beekeepers start successfully. Mentoring involves:

- Answering practical questions about getting started with bees and equipment;
- Inspiring new beekeeper confidence by visiting the new bee-yard;
- Encouraging new beekeepers to follow the best beekeeping practices;
- Involving the new beekeeper in a visit to an established bee-yard; and most importantly
- Sharing your bee-keeping experiences.

Mentors do not need to attend bee school. The mentoring program (very successful last year) is designed to give the new beekeepers a friend to answer questions or concerns that can't wait for the next monthly Bee-Keepers meeting. An interesting side benefit to the mentors is that NewBees actively seek experience carrying supers, uncapping frames and cranking extractors!

Please contact Gerry Mack at 704.358.8075 to help out a few new beekeepers.



DUES DUES DUES DUES DUES DUES

Yes it's that time of year, time to renew your membership in our county association, and if you're not yet a member of the North Carolina State Association, consider joining up there too. Both organizations deliver great value for your membership dollars, so support your beekeeping associations.

Mail this form and your check made out to Mecklenburg County Beekeepers to
Mecklenburg County Beekeepers
121 Hermitage Rd
Charlotte NC 28207

You can also get discounts of 20-25% on Bee Culture and American Bee Journal. See Libby for a coupon or to pay directly for the subscription.

Mecklenburg County Beekeepers Association

Please Print Clearly

Name _____

Address _____

City _____ State _____ Zip _____

Phone _____

Email _____

Send newsletter via _____ email (thanks!) _____ paper

Number of hives: _____

Today's Date _____ Membership Year 2008

Bee School \$25 _____ I am registering for Bee School
Includes 1 year membership in County Association
I heard about the bee school from _____

County Association \$5 I am a _____ New Member
_____ Renewing Member

State Association \$15 I am a _____ New Member
_____ Renewing Member

Total Payment