



**G O T T A B E E**

Mecklenburg Beekeepers Association  
Meets the 3rd Thursday of each month at 7 pm  
2219 Tyvola Road  
Marion Diehl Park and Rec Building  
Mailing address: 121 Hermitage Rd Charlotte NC 28207  
704-358-8075  
Visit our website at

[www.meckbees.org](http://www.meckbees.org)



*President -  
Greg Clements*

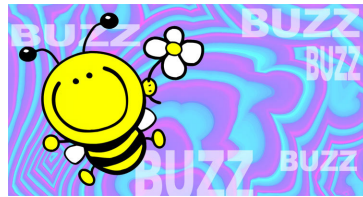
*Vice President -  
Richard Flanagan*

*Treasurer -  
Libby Mack*

*Chaplain -  
Gene Shannon*



### This Month's Meeting/Program Dec 20th



**This month we are having our Holiday Potluck dinner. All are invited and remember to bring a dish to share as we break bread and spend some time getting to know each other a little bit more over our meal. Come hungry and stay and enjoy the great food and company.**

**This months refreshments are provided by**

**All of us!**

**Sam Ritter, a Commercial Beekeeper here in Mecklenburg County, needs a beekeeper to help him out in 2008. He is looking for someone willing to run one of his beeyards in 2008. Interested? Call him at 704-365-4623**

#### **Burt's Bees Sets Out to Rescue Its Own**

Burt's Bees Partners with NAPPC to Raise Awareness of Colony Collapse Disorder

<http://apitherapy.blogspot.com/2007/11/bee-friendly-seeds-offered-in-ccd.html>

The mysterious disappearance of bees, called Colony Collapse Disorder (CCD), is a growing threat to honey bees, the mainstay of pollination services in agriculture. Bee-friendly, natural personal care company Burt's Bees is addressing this environmental issue by developing a campaign with co-founder Burt Shavitz that will raise consumer awareness through PSA distribution, online marketing and consumer sampling efforts.

## Updates and Information

# *Beekeepers Yearly Management Calendar for* December

Make repairs on your equipment, assemble new equipment and make some time to plan your next beekeeping year.

### *Speakers for 2007*

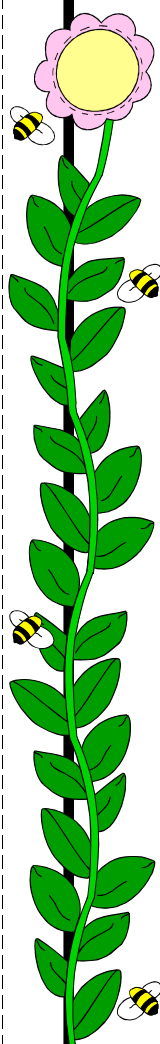
**Dec- Potluck Dinner**

**Jan 2008 -  
Prof. Buddy Marterre  
Bee Stings**

**Feb Bob Blackwelder  
Artificial  
Insemination**

**March - Chip Stowe  
Gaston County  
Beekeeper**

**April—Art Duckworth  
Gaston County  
Beekeeper**



## **The North Carolina Zoo Society**

cordially invites you to join us  
for a special groundbreaking ceremony...

### *Honey Bee Exhibit*

*Friday, December 14, 2007  
at 10:00 a.m.*

Our guests will gather at the  
North America Entrance of the N.C. Zoo  
to be transported to the site of the Honey  
Bee Exhibit.

Please R.S.V.P. by December 10, 2007  
by calling 336-879-7285 or e-mail  
[ksparks@nczoo.com](mailto:ksparks@nczoo.com)

*Comfortable walking shoes are recommended.*



## **National Honey Board Issues Request for Production Research Proposals Studying Colony Health**

NHB announces a request for research proposals regarding honey bee colony production. The goal of this research area is to help honey producers maintain colony health, while preserving honey quality. Controlling such pests as the Varroa destructor, Acarapis woodi and the small hive beetle is the primary objective of this research area; however, other projects will be considered, as well as research outside the United States. NHB will also consider proposals that research new methods, as well as combinations of existing methods to increase efficacy rates.

Approximately \$50,000 has been earmarked for this study. However, the amount of funds available will depend on the number and merit of proposals accepted. Project funds will be available in 2008 and may be carried into early 2009 if necessary. The duration of the project should generally not exceed 12 months.

Research proposals should be sent to NHB on or before Dec. 31, 2007. For more information, visit <http://www.honey.com/media/currentnews.asp>, or contact Charlotte Jordan, project manager at (800) 553-7162.

## **Colony Collapse Disorder Symposium Added to ESA Annual Meeting**

A late-breaking symposium, "Colony Collapse Disorder in Honey Bees: Insight Into Status, Potential Causes, and Preventive Measures," was recently added to the 55th Annual Meeting of the Entomological Society of America (ESA), to be held in San Diego, Dec. 9-12. The symposium, headed by entomologists Diana Cox-Foster (Penn State University) and Jeff Pettis (USDA-ARS), will explore possible factors that may have caused honey bee deaths since 2006, such as pathogens, parasites, viruses, bacteria, disease, pesticide exposure, and breeding practices. In addition, the myths and mysteries of CCD will be discussed, as well as possible ways to combat the phenomenon.

"This symposium will introduce many of the areas of concern for bee health and Colony Collapse Disorder, and it features many of the top scientists who are tackling CCD," said Cox-Foster. "In addition, the speakers will profile many of the cutting-edge techniques that are allowing us to determine what causes are underlying declines in honey bee health."

The four-hour symposium will feature a dozen speakers, all of whom are listed at <http://www.entsoc.org/ccd.htm> along with the titles of their presentations. The symposium is scheduled to begin at 1:30 p.m. on Tuesday, December 11, 2007 in the Golden West room (near the Atlas Ballroom) at the Town and Country Resort and Convention Center.

---

**North Carolina State Beekeepers Association, Inc.**

[www.ncbeekeepers.org](http://www.ncbeekeepers.org)

**“NCSBA \$50,000 CLUB”**

**Membership Application**

**\*A “MEMBER, NCSBA \$50,000 CLUB, ZOO HONEY BEE EXHIBIT”**

T-shirt is reserved for applicants.\*

This is my application for membership in the “NCSBA \$50,000 Club”  
to benefit the NC Zoo Honey Bee Exhibit.

For this membership, I pledge to give \$100 before July 1, 2008.

**Gift may be either lump sum or installments:**

- CHECK (Made payable to “NC Zoological Society Honey Bee Exhibit”)
- CREDIT CARD amount \$ \_\_\_\_\_  Visa  MasterCard Discover  American Express

Credit Card Number

Expiration Date

Signature

(Please Print) First Name MI Last Name T-Shirt Size (S, M, L, XL)

Mailing Address City State Zip

- Please credit this contribution to my chapter pledge. (Fund - 1670)

Name of my NCSBA Chapter

Signature

Please send this form and remittance to:

**NC Zoological Society Honey Bee Exhibit**  
**4403 Zoo Parkway, Asheboro, NC 27205**

Questions? Please call Irvin E. Rackley: 252-236-4560 or 252-446-5487.

THANK YOU!



The North Carolina Zoo Society Honey Bee Exhibit is almost at its goal of reaching its funds for a permanent exhibit for beekeeping at the Zoo. Last totals show we are 10,000 dollars short of making this a reality. A challenge was presented by one of our local beekeepers to our club to come up with \$1,000 by the December Potluck Dinner. This individual will match that \$1,000 with their \$1,000. These funds will be matched with a grant enabling us to raise \$4,000 toward the Zoo exhibit. Let's not let this chance pass us up to help make a contribution to the Zoo for an exhibit that will educate and teach all those who visit the zoo on the positive aspects of beekeeping.

## **Bee School Is Coming!**

**Bee School 2008 starts January 29. Tell all your friends and neighbors to join us for this year's class. Do you have new or gently used equipment or books to donate? Door prizes are greatly appreciated by the class and make for lively discussions. Please bring donated items to the December or January meeting.**

**Thanks**

---

## **DUES DUES DUES DUES DUES DUES**

Yes it's that time of year, time to renew your membership in our county association, and if you're not yet a member of the North Carolina State Association, consider joining up there too. Both organizations deliver great value for your membership dollars, so support your beekeeping associations.

Mail this form and your check made out to Mecklenburg County Beekeepers to  
Mecklenburg County Beekeepers 121 Hermitage Rd Charlotte NC 28207

You can also get discounts of 20-25% on Bee Culture and American Bee Journal.

See Libby for a coupon or to pay directly for the subscription.

Mecklenburg County Beekeepers Association

Please Print Clearly

Name \_\_\_\_\_

Address \_\_\_\_\_

City \_\_\_\_\_ State \_\_\_\_\_ Zip \_\_\_\_\_

Phone \_\_\_\_\_

Email \_\_\_\_\_

Send newsletter via \_\_\_\_\_ email (thanks!) \_\_\_\_\_ paper

Number of hives: \_\_\_\_\_

Today's Date \_\_\_\_\_ Membership Year 2008

Bee School \$25 \_\_\_\_\_ I am registering for Bee School

Includes 1 year membership in County Association

I heard about the bee school from \_\_\_\_\_

County Association \$5 I am a \_\_\_\_\_ New Member \_\_\_\_\_ Renewing Member

State Association \$15 I am a \_\_\_\_\_ New Member \_\_\_\_\_ Renewing Member

\_\_\_\_\_ Total Payment

---

---